

HUNTERS[®]

HERE TO GET *you* THERE



Brownfield Gardens

Maidenhead, SL6 2RL

Asking Price £295,000



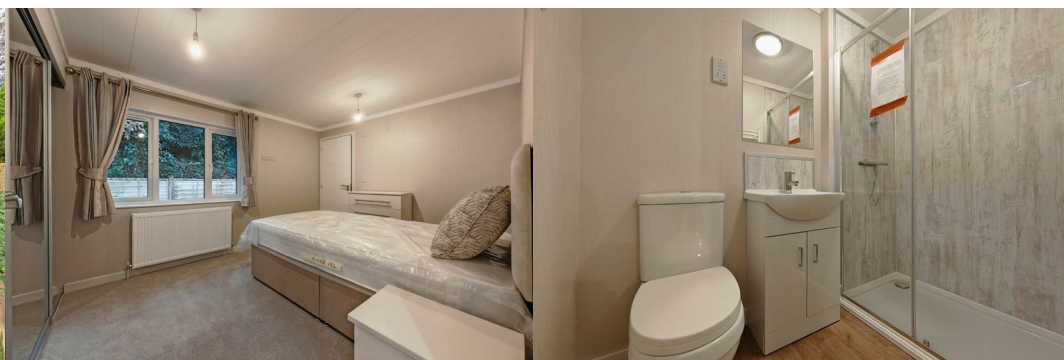
*****CASH BUYERS ONLY*****

Introducing the Brownfield Gardens Park Home

Welcome to luxury living at Brownfield Gardens! This brand-new 40ft x 20ft, 2-bedroom, 2-bathroom park home is the epitome of modern design and comfort. Boasting a sleek, high-spec interior, this home offers spacious, open-plan living areas, a contemporary kitchen with integrated appliances, and stylishly designed bathrooms for a touch of elegance.

The property is situated on a stunning private plot, featuring its very own enclosed garden – perfect for outdoor relaxation or entertaining guests. Convenience is key, with a private driveway accommodating up to 4 cars, offering ample space for you and your visitors.

Brownfield Gardens combines the tranquility of countryside living with all the modern comforts you could desire. Make this exclusive home yours and enjoy the perfect blend of style, space, and privacy.



Area Map



Floor Plans



Energy Efficiency Graph



These particulars are intended to give a fair and reliable description of the property but no responsibility for any inaccuracy or error can be accepted and do not constitute an offer or contract. We have not tested any services or appliances (including central heating if fitted) referred to in these particulars and the purchasers are advised to satisfy themselves as to the working order and condition. If a property is unoccupied at any time there may be reconnection charges for any switched off/disconnected or drained services or appliances - All measurements are approximate. **THINKING OF SELLING?** If you are thinking of selling your home or just curious to discover the value of your property, Hunters would be pleased to provide free, no obligation sales and marketing advice. Even if your home is outside the area covered by our local offices we can arrange a Market Appraisal through our national network of Hunters estate agents.